



Waxman
Architectural Tiles



W K
series

UNGLAZED
unglazed porcelain stoneware
UNI EN14411
Annexe G Group B1a UGL





Unglazed Porcelain Stoneware

CONTENTS

4	Colours
9	Sizes
10	Special Pieces
12	Technical Features



UNGLAZED
unglazed porcelain stoneware
UNI EN14411
Annexe G Group B1a UGL



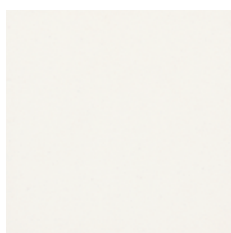
Unglazed Porcelain Stoneware



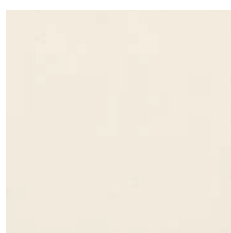


UNGLAZED
unglazed porcelain stoneware
UNI EN14411
Annexe G Group B1a UGL

COLOURS



WK - 120
Super White



WK - 121
White



WK - 136
Ontario



WK - 122
Pearl



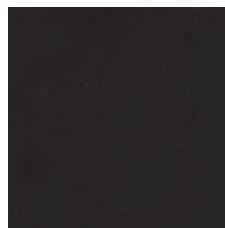
WK - 123
Pale Grey



WK - 124
Grey



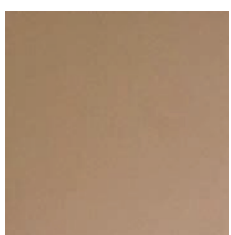
WK - 125
Anthracite



WK - 126
Black



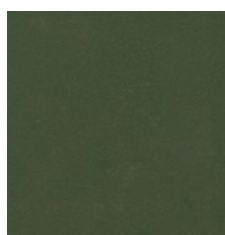
WK - 135
Linen



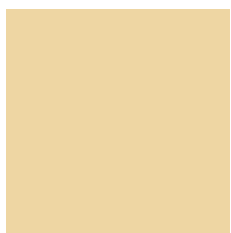
WK - 139
Taupe



WK - 134
Coffee



WK - 101
Brown



WK - 131
Vanilla



WK - 130
Ivory



WK - 132
Cognac

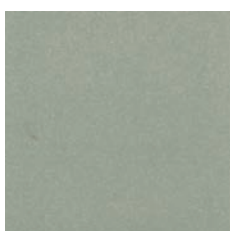


UNGLAZED
unglazed porcelain stoneware
UNI EN14411
Annexe G Group B1a UGL

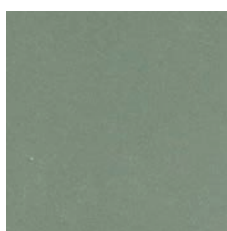
COLOURS



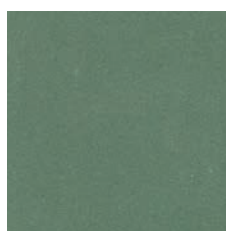
WK - 150
Pistache



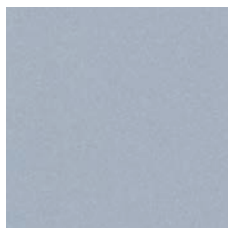
WK - 151
Pale Green



WK - 152
Green



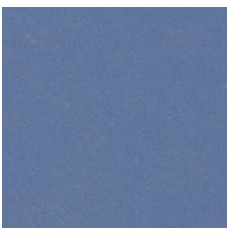
WK - 153
Dark Green



WK - 141
Pale Blue



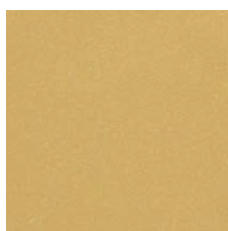
WK - 142
Blue



WK - 143
Dark Blue



WK - 144
Blue Moon



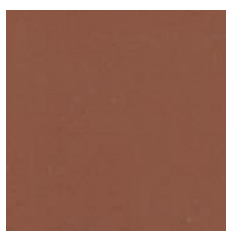
WK - 133
Yellow



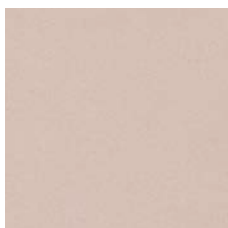
WK - 138
Caramel



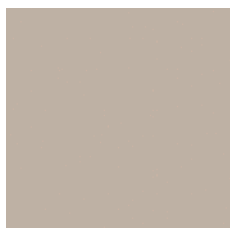
WK - 137
Havana



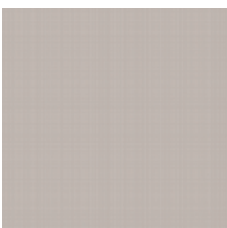
WK - 100
Red



WK - 110
Pink



WK - 111
Old Pink



WK - 112
Parme

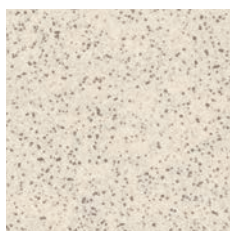




WK series

UNGLAZED
unglazed porcelain stoneware
UNI EN14411
Annexe G Group B1a UGL

COLOURS



WK - 201
Brittany



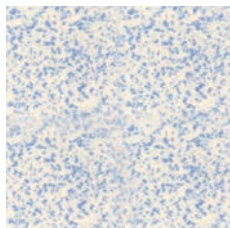
WK - 202
Yellow Speck



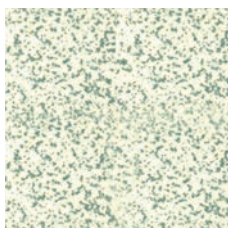
WK - 203
Stone Speck



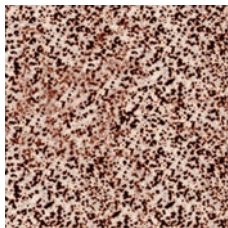
WK - 207
Pink Speck



WK - 208
Blue Speck



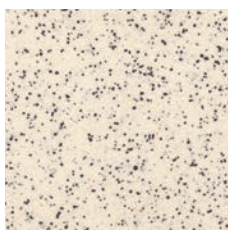
WK - 209
Green Speck



WK - 210
Red Speck



WK - 255
Loire



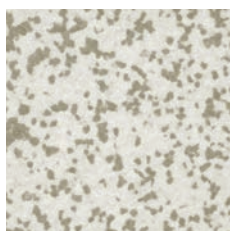
WK - 257
Pyrenees



WK series

UNGLAZED
unglazed porcelain stoneware
UNI EN14411
Annexe G Group B1a UGL

COLOURS



WK - 501
Porph Grey



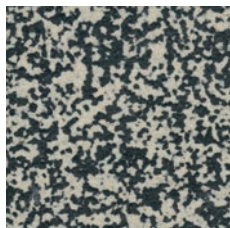
WK - 502
Porph Yellow



WK - 503
Porph Stone



WK - 504
Porph Brown



WK - 505
Porph Black



WK - 506
Porph Rust



WK - 507
Porph Rose



WK - 508
Porph Blue



WK - 509
Porph Green



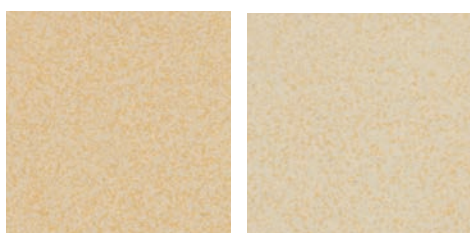
WK - 510
Porph Red



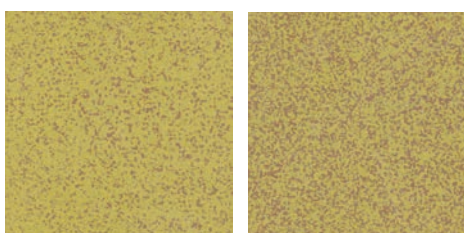
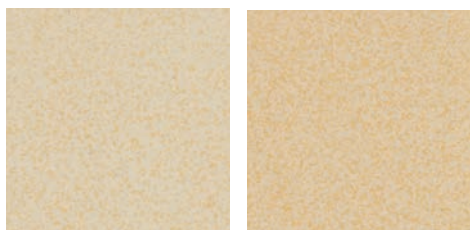
WK series

UNGLAZED
unglazed porcelain stoneware
UNI EN14411
Annexe G Group B1a UGL

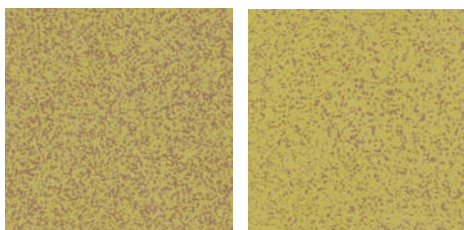
COLOURS



WK - 600
Charmette


















WK - 601
Charmille





UNGLAZED
unglazed porcelain stoneware
UNI EN14411
Annexe G Group B1a UGL

SIZES

																
	SIZE THICKNESS	15x15cm 9mm	10x10cm 9mm	7x7cm 9mm	5x5cm 5mm	2.3x5cm 5mm	2x2cm 3.8mm	1.2x1.2cm 3.8mm	15x15cm 9mm	10x10cm 9mm	5x5cm 9mm	3.5x3.5cm 9mm	10x10cm 9mm	5x5cm 5mm	2.5x2.5cm 3.8mm	7x7cm 9mm
SINGLE COLOUR	WK-120 Super White	●	●	●	●	●	●	●	●	●	●	●	●	●	●	●
	WK-121 White	●	●	●	●	●	●	●	●	●	●	●	●	●	●	●
	WK-136 Ontario	●	●	●	●	●	●	●	●	●	●	●	●	●	●	●
	WK-122 Pearl	●	●	●	●	●	●	●	●	●	●	●	●	●	●	●
	WK-123 Pale Grey	●	●	●	●	●	●	●	●	●	●	●	●	●	●	●
	WK-124 Grey	●	●	●	●	●	●	●	●	●	●	●	●	●	●	●
	WK-125 Anthracite	●	●	●	●	●	●	●	●	●	●	●	●	●	●	●
	WK-126 Black	●	●	●	●	●	●	●	●	●	●	●	●	●	●	●
	WK-135 Linen	●	●	●	●	●	●	●	●	●	●	●	●	●	●	●
	WK-139 Taupe	●	●	●	●	●	●	●	●	●	●	●	●	●	●	●
	WK-134 Coffee	●	●	●	●	●	●	●	●	●	●	●	●	●	●	●
	WK-101 Brown	●	●	●	●	●	●	●	●	●	●	●	●	●	●	●
	WK-131 Vanilla	●	●	●	●	●	●	●	●	●	●	●	●	●	●	●
	WK-130 Ivory	●	●	●	●	●	●	●	●	●	●	●	●	●	●	●
	WK-132 Cognac	●	●	●	●	●	●	●	●	●	●	●	●	●	●	●
	WK-150 Pistache	●	●	●	●	●	●	●	●	●	●	●	●	●	●	●
	WK-151 Pale Green	●	●	●	●	●	●	●	●	●	●	●	●	●	●	●
	WK-152 Green	●	●	●	●	●	●	●	●	●	●	●	●	●	●	●
	WK-153 Dark Green	●	●	●	●	●	●	●	●	●	●	●	●	●	●	●
	WK-141 Pale Blue	●	●	●	●	●	●	●	●	●	●	●	●	●	●	●
	WK-142 Blue	●	●	●	●	●	●	●	●	●	●	●	●	●	●	●
	WK-143 Dark Blue	●	●	●	●	●	●	●	●	●	●	●	●	●	●	●
	WK-144 Blue Moon	●	●	●	●	●	●	●	●	●	●	●	●	●	●	●
	WK-133 Yellow	●	●	●	●	●	●	●	●	●	●	●	●	●	●	●
	WK-136 Caramel	●	●	●	●	●	●	●	●	●	●	●	●	●	●	●
	WK-137 Havana	●	●	●	●	●	●	●	●	●	●	●	●	●	●	●
	WK-100 Red	●	●	●	●	●	●	●	●	●	●	●	●	●	●	●
	WK-110 Pink	●	●	●	●	●	●	●	●	●	●	●	●	●	●	●
	WK-111 Old Pink	●	●	●	●	●	●	●	●	●	●	●	●	●	●	●
	WK-112 Parme	●	●	●	●	●	●	●	●	●	●	●	●	●	●	●
SPECKLED	WK-201 Brittany		●		●		●									
	WK-202 Yellow Speck						●									
	WK-203 Stone Speck						●									
	WK-207 Pink Speck				●		●									
	WK-208 Blue Speck						●									
	WK-209 Green Speck						●									
	WK-210 Red Speck						●									
	WK-255 Loire				●											
	WK-257 Pyrenees		●		●				●							
	WK-501 Porph Grey	●	●		●											
	WK-502 Porph Yellow	●	●		●									●		
	WK-503 Porph Stone		●		●									●		
	WK-504 Porph Brown		●		●											
	WK-505 Porph Black		●		●											
	WK-506 Porph Rust		●		●											
	WK-507 Porph Rose		●		●											
	WK-508 Porph Blue		●		●											
	WK-509 Porph Green		●		●											
	WK-510 Porph Red		●		●											
	WK-600 Charmette		●		●											
	WK-601 Charmille		●		●											

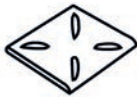


UNGLAZED
 unglazed porcelain stoneware
 UNI EN14411
 Annexe G Group B1a UGL

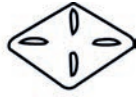
SPECIAL PIECES



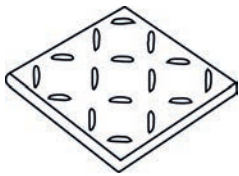
Rice Grain - Anti Slip Finish
5x5cm



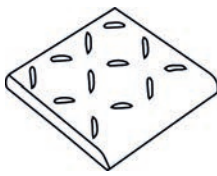
ORE - Anti Slip Round Edge
5x5cm



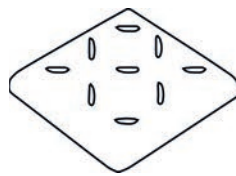
REX - Anti Slip Two Round Edge
5x5cm



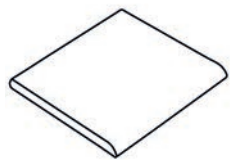
Rice Grain - Anti Slip Finish
10x10cm



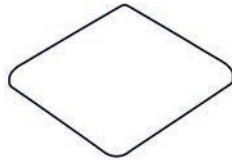
ORE - Anti Slip Round Edge
10x10cm



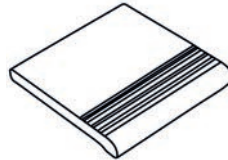
REX - Anti Slip Two Round Edge
10x10cm



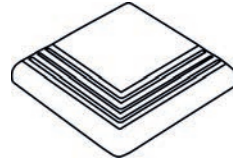
ORE White - Round Edge
10x10cm, 5x5cm



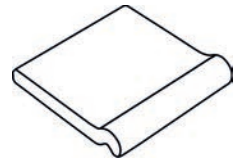
REX - Two Round Edge
10x10cm, 5x5cm



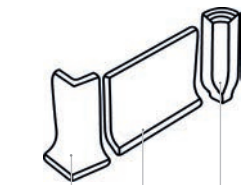
NDM - Step Edge
10x10cm, 5x5cm



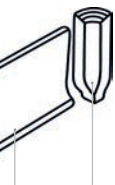
2NDM - Double Edge Step
10x10cm, 5x5cm



FG - Finger Grip Edge
10x10cm



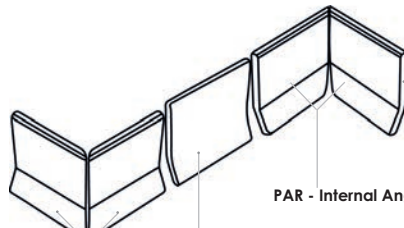
PAG - External
Angle



PAG - Butt up
Skirting
10x10cm



PAG - Internal
Angle



PAR - Sit on Skirting
10x10cm

PAR - External Angle

PAR - Internal Angle



UNGLAZED
unglazed porcelain stoneware
UNI EN14411
Annexe G Group B1a UGL

SPECIAL PIECES



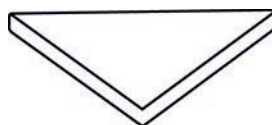
Triangle 35
3.5x3.5x5cm



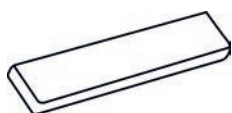
Triangle 70
7x7x10cm



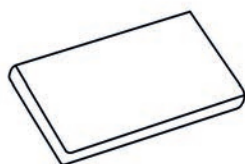
Triangle 50
5x5x7cm



Triangle 100
10x10x14cm



Strip
2.5x15cm



Strip
5x15cm












Shuttle
7.5x15cm



UNGLAZED
unglazed porcelain stoneware
UNI EN14411
Annexe G Group B1a UGL

TECHNICAL FEATURES

	Norm Standards	Test results
 Product Classification	UNI EN 14411	B1a UGL
 Dimensional and surface quality	UNI EN ISO 10545-2	Conforms
 Water absorption	UNI EN ISO 10545-3	0.1-0.5%
 Flexural strength	UNI EN ISO 10545-4	380-450 kgf/cm ²
 Frost resistance	All standards	Conforms
 Resistance to acids and alkalis (except hydrofluoric acid)	UNI EN ISO 10545-13	No damage
 Wear and abrasion resistance		Mohs 7
 Linear thermal expansion	UNI EN ISO 10545-8	Conforms to standards

 Slip resistance		Natural Finish			Rice Grain Anti-Slip Finish	
		2x2cm	5x5cm	10x10cm	5x5cm	10x10cm
	DIN51130	R10	R10	R10	R10	R10
	DIN51097	C	C	B	C	C



Unglazed Porcelain Stoneware

Waxman Architectural Tiles

Head Office **01422 377123**

Grove Mills
Elland
West Yorkshire
HX5 9DZ
England

London Office **020 7717 5565**

Email info@waxmanarchitectural.co.uk
Web www.waxmanarchitectural.co.uk

Waxman Architectural Tiles is a division of Waxman Ceramics Ltd - Part of the Waxman Group